

GEO

LED Street Light



GEO

LED Street Light



Keselec

Introduces an alternate for narrow and rural roads

DESCRIPTION

The GEO is a cost-effective alternate to replace CFL/fluorescent lamps for narrow residential & peripheral roads, driveways, car parks, cycle tracks, pedestrian areas and perimeter lighting. The luminaire offers uniform lighting with 15W & 20W options.

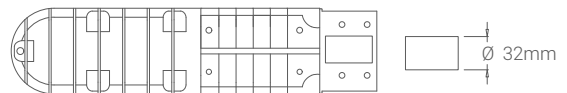
The luminaire painted white, has a die cast aluminium body, an anti-UV PC protector with integrated lenses, screwed onto the body with a silicon gasket to achieve an IP 66 tightness.

KEY FEATURES

- Suitable for narrow roads & large spacing
- Designed to withstand temperature up to 50° C
- Supplied pre-cabled (0.3m) for easy installation
- Compact and light weight

MOUNTING

SIDE ENTRY



CHARACTERISTICS

Luminaire Efficacy	: 110 lm/W (optional 120 lm/W)
Colour Temperature (CCT)	: 5700 K
Colour Rendering Index (CRI)	: 70
Optical & Control Gear Tightness	: IP 66
Impact Resistance	: IK 07
Lumen Maintenance	: L70 @ 50,000 Hours
Operating Voltage	: 120-270 V
Body Colour	: White
Electrical Class	: 1

FEATURES



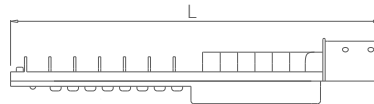
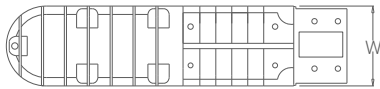
HEAT SINK
Designed for
Efficient thermal
management



INTEGRATED LENSES
For enhanced
optical efficacy

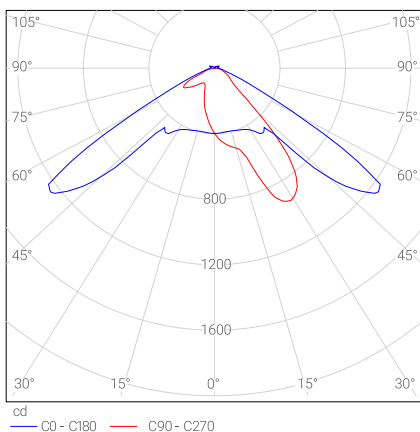
PRODUCT RANGE & DIMENSIONS

Catalogue Reference	Size (mm)			Weight (gm)
	L	W	H	
GEO 15W CW LED	318	75	60	730
GEO 20W CW LED	318	75	60	800



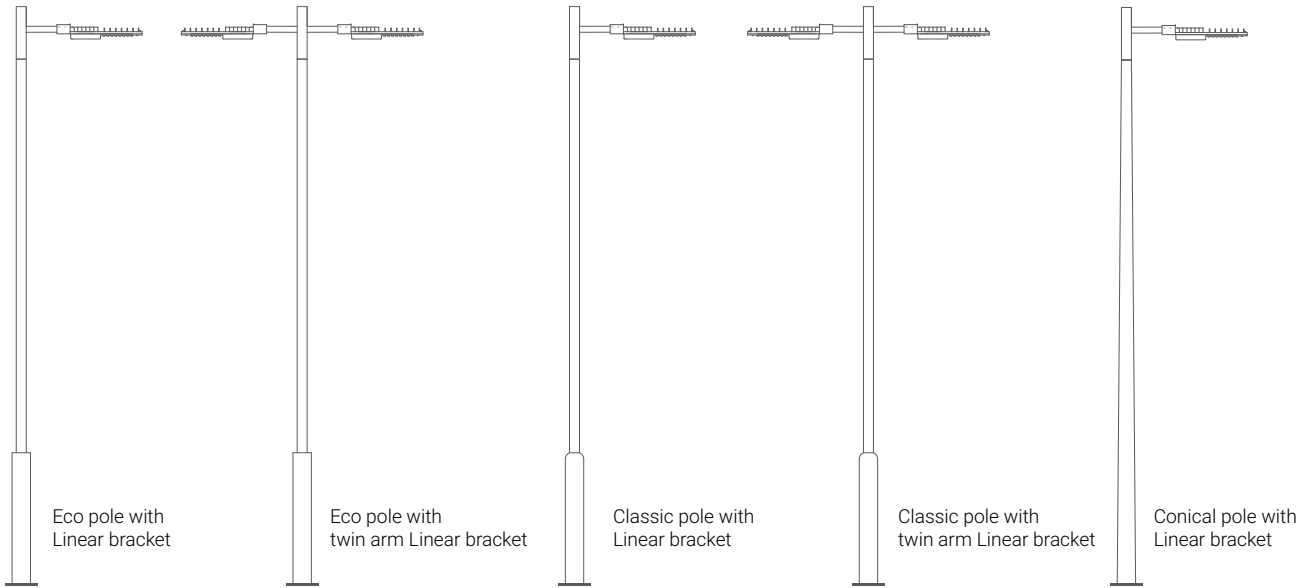
PHOTOMETRY

- Each LED has a specific lens that generates uniform light distribution
- The Upward Light Output Ratio (ULOR) is 0% at 0° inclination to avoid light pollution



POLES & BRACKETS

3-6 m



The information, description and illustrations are only of an indicative nature and due to continuous R&D on our products we reserve the right to alter the characteristics without notice. As specific projects may have different characteristics, we invite you to consult us.
Version 1.00/August 2018/2000

Keselec Lighting Private Limited

55 Industrial Area | NIT | Faridabad - 121001 | Haryana | India
M +91 85275 86444 | info@keselec.com

www.keselec.com

